

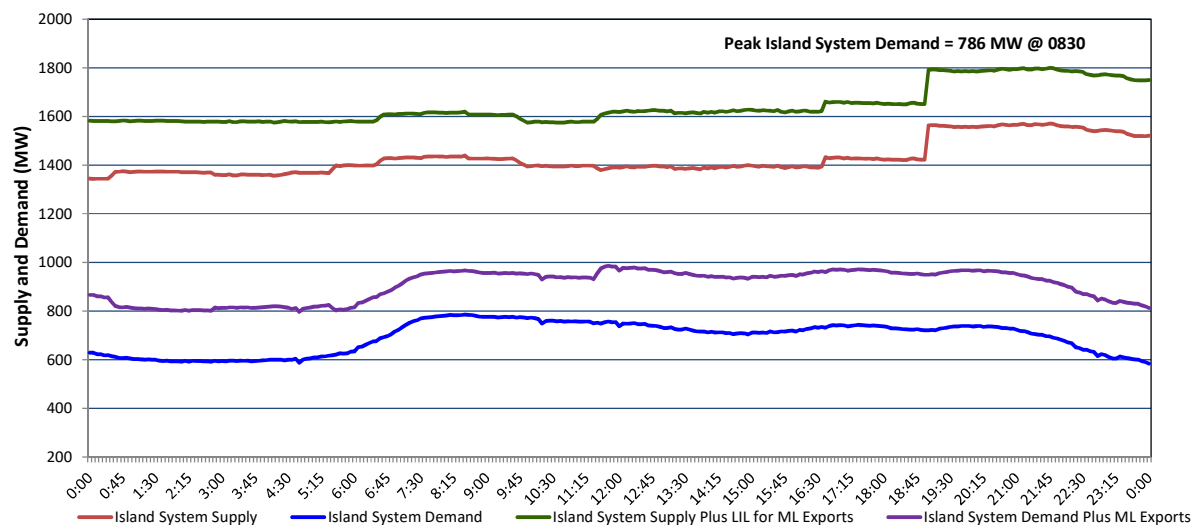
Newfoundland Labrador Hydro (NLH)

Supply and Demand Status Report Filed Thursday, September 18, 2025

Section 1

Island Interconnected System - Supply, Demand & Exports

Actual 24 Hour System Performance For Wednesday, September 17, 2025



Island Supply Notes For September 17, 2025

- A As of 0800 hours, March 30, 2025, Holyrood Unit 3 unavailable due to planned outage 130 MW (150 MW).
- B As of 0823 hours, March 31, 2025, Bay d'Espoir Unit 1 unavailable due to planned outage (76.5 MW).
- C As of 0823 hours, March 31, 2025, Bay d'Espoir Unit 2 unavailable due to planned outage (76.5 MW).
- D As of 2000 hours, September 13, 2025, Holyrood Unit 2 unavailable due to forced extension to planned outage 115 MW (170 MW).
- E As of 1134 hours, September 15, 2025, Labrador Island Link available at 450MW due to planned derating (700 MW) - Monopole.
- F At 0820 hours, September 17, 2025, Granite Canal Unit unavailable due to forced outage (40 MW).
- G At 1312 hours, September 17, 2025, St. Anthony Diesel Plant unavailable due to a planned outage (9.7 MW).
- H At 1640 hours, September 17, 2025, Granite Canal Unit available (40 MW).
- I At 1900 hours, September 17, 2025, Holyrood Unit 1 available at 140 MW due to a planned derating (170 MW).

Section 2

Island Interconnected System - Supply, Demand & Outlook

Thu, Sep 18, 2025		Island System Outlook ²		Seven-Day Forecast		Island System Daily Peak Demand (MW)	
						Forecast ⁸	Adjusted ⁶
Island System Supply: ⁴		1,576 MW		Thursday, September 18, 2025		785	735
NLH Island Generation: ^{3,7}		1,180 MW		Friday, September 19, 2025		765	715
NLH Island Power Purchases: ⁵		50 MW		Saturday, September 20, 2025		775	725
NP and CBPP Owned Generation:		195 MW		Sunday, September 21, 2025		830	780
LIL/ML Net Imports to Island: ⁹		151 MW		Monday, September 22, 2025		815	765
				Tuesday, September 23, 2025		795	745
7-Day Island Peak Demand Forecast:		830 MW		Wednesday, September 24, 2025		790	740

Island Supply Notes For September 18, 2025

- Notes:
1. Generation outages for running and corrective maintenance are included. These are not unusual for power system operations. They generally do not impact customer supply. Hydro schedules outages to system equipment whenever possible to coincide with periods when customer demands are low and sufficient supply reserves are available. However, from time to time equipment outages are necessary and reserves may be impacted.
 2. As of 0800 Hours.
 3. Gross continuous unit output.
 4. Gross output from all Island sources (including Note 3).
 5. NLH Island Power Purchases include: ML Imports, Exploits Generation, Rattle Brook, Star Lake, Wind Generation and capacity assistance (when applicable).
 6. Adjusted for interruptible load and the impact of voltage reduction when applicable.
 7. Due to limitations inherent in the design of combustion turbines, the output of combustion turbines may be reduced in the event that ambient temperatures exceed the threshold required for full rated output. This threshold is dependent on the design of each turbine.
 8. Does not include ML Exports.
 9. LIL Import sunk in the Island System. Actual LIL flows will be restricted by various system conditions including, but not limited to, Island Load, ML Exports and Avalon Unit status.

Section 3

Island Peak Demand and Exports Information

Previous Day Actual Peak and Current Day Forecast Peak

Wed, Sep 17, 2025	Island Peak Demand ¹⁰	8:30	786 MW
	Exports at Peak		181 MW
	LIL Net Imports to Island		3,296 MWh
Thu, Sep 18, 2025	Forecast Island Peak Demand		785 MW

- Notes:
10. Island Demand is supplied by NLH generation and purchases, LIL Imports plus generation owned and operated by Newfoundland Power and Corner Brook Pulp & Paper (Deer Lake Power, DLP).